

Brand Activation Tables



Zukarra

Why hire furniture when you can own, custom-print and re-use Xanita promo furniture and save big Dollars? Zukarra flat-packs for cost-efficient transport to and from events and promotions. One table and four stools included. Have your logos, brands, patterns or images direct inkjet-printed on any surface.

Width / Depth / Height
600 / 1200 / 730mm



Tilley

Why hire furniture when you can own, custom-print and re-use Xanita promo furniture and save big Dollars? Tilley flat-packs for cost-efficient transport to and from events and promotions. One table and two stools included. Have your logos, brands, patterns or images direct inkjet-printed on any surface.

Width / Depth / Height
650 / 1400 / 720mm



Desko

Why hire furniture when you can own, custom-print and re-use Xanita promo furniture and save big Dollars? Desko flat-packs for cost-efficient transport to and from events and promotions. One table and four stools included. Have your logos, brands, patterns or images direct inkjet-printed on any surface.

Width / Depth / Height
500 / 1100 / 720mm

Brand Activation Tables



Fagelea

Fagelea is a perfect podium or tasting table where surfaces can be printed for brand activations. Setup is easy and transport even easier as the whole unit flat packs and weighs less than 15kg. Have your logos, brands, patterns or images direct inkjet-printed on any surface.

Width / Depth / Height
550 / 270 / 1000mm



Niobium

Niobium is for indoor or short-term outdoor brand activations. Add an optional bucket insert or other accessories, including acrylic top.

420L / 850W / 1000Hmm



Caesia

Caesia is a popular, larger display podium or customer service counter. Add an optional bucket insert or other accessories, including acrylic top.

Width / Depth / Height
890 / 390 / 970mm

Brand Activation Tables



Dillion

Dillion is a compact plinth or table used where floor space is at a premium. Add an optional bucket insert or other accessories, including acrylic top. Have your logos, brands, patterns or images direct inkjet-printed on any surface.

Width / Depth / Height
500 / 250 / 800mm



Cocktail

Cocktails are great for social events. Have your promotional messages, logos, brands, patterns or images direct inkjet-printed on the top or any surface.

Width / Depth / Height
600 / 600 / 1100mm



Blickies

Blickies is great for informal meetings at events or for dressing up a reception area during a product or service launch. Supplied with two chairs. Order more as needed.

Table:
Width / Depth / Height
700 / 1200 / 380mm
Chairs:
Width / Depth / Height
520 / 580 / 580mm

Brand Activation Tables



8seconds

This table boasts the easiest and fastest set-up time ever, hence its name! It flat packs as one piece and has great branding space.

Width / Depth / Height
500 / 400 / 870mm



Johnson Plinth

A glorifier for smaller merchandise, Johnson offers a small footprint with a large branding space. Have your logos, brands, patterns or images direct inkjet-printed on any surface.

Width / Depth / Height
250 / 250 / 900mm



Stretch Bench Seat

Stretch bench seats can be scattered as branded furniture at an event or promotion. Matching branded cushions can be supplied for additional seating comfort.

Width / Depth / Height
500 / 400 / 450mm



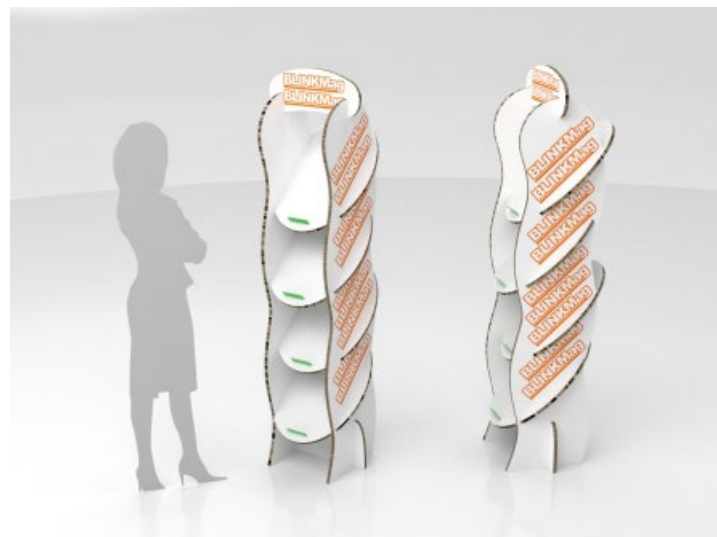
Brand Activation Tables



Lulu

Lulu saves having to mount prints onto hired wooden lecturns. Use it on a stage, on your expo booth or in a public greeting area.

Width / Depth / Height
500 / 350 / 1000mm



Montplast

A stylish, flat-packable brochure holder or magazine merchandiser, Montplast offers multiple print-ready surfaces for promotional branding. Have your logos, brands, patterns or images direct inkjet-printed on any surface.

Width / Depth / Height
450 / 390 / 1700mm



Teedia

Teedia presents a more traditional shaped brochure or catalogue holder, with printed, wrap-over edging on the front shelves and uprights. Have your logos, brands, patterns or images direct inkjet-printed on any surface.

Width / Depth / Height
510 / 320 / 1820mm

Standees



Sputnik

Sputnik replaces metal A-Boards used indoors at events and retail centers. Cut three units from one sheet of X-Board. Sputnik delivers lowest cost and is fully repulpable post promotions.

Width / Depth / Height
600 / 430 / 1200mm



Westia

Westia is a stylish, 100mm thick, double-sided free-standing standee with maximum branding area available from all viewing directions. Mount a lightweight digital display at eye-level and/or add display hooks, mirrors and other accessories as required.

Width / Depth / Height
790 / 395 / 2000mm



Indaba

Indaba is a stylish, double-sided free-standing standee with maximum branding area available from all viewing directions. It's 400mm taller than Westia, double-side printable, but not as structurally-stable in its top half. CNC cut the top half to any product shape. Add LED lighting for extra visual appeal.

Width / Depth / Height
600 / 495 / 2400mm

Standees



Endeavour

Endeavour packs into a small vehicle, yet extends on site to over 2 mtrs tall. Great for marketing activations when contour-cut into product shapes. Optionally print both sides.

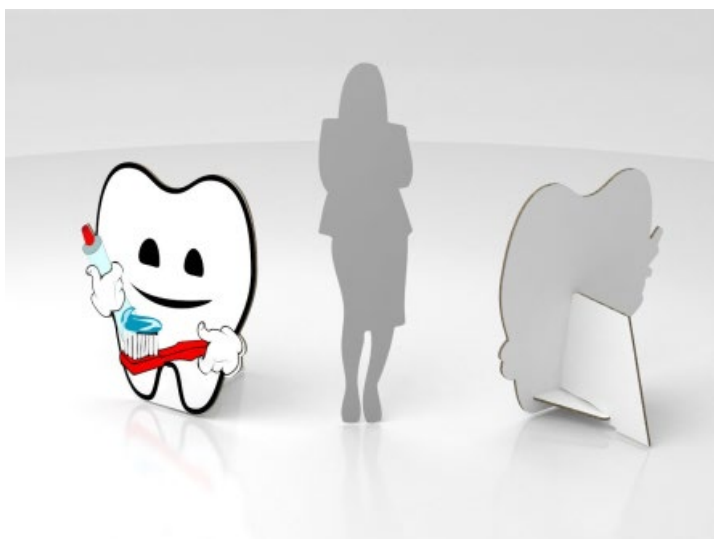
Width / Depth / Height
900 / 490 / 2150mm



Orbit

Orbit packs into a small size but extends on site to nearly 2 mtrs tall. Great for brand activations when contour-cut into product shapes. Double-sided print available.

Width / Depth / Height
600 / 500 / 1940mm



Aves

Aves exhibits a "picture frame" stabilising foot at the back of the standee, leaving maximum branding space on the front panel.

Width / Depth / Height
780 / 500 / 1840mm

Free Standing Merchandisers



5-Stand

Suitable for storing multiple lightweight products, the shelves and the back spine panel can be printed and creatively shape-cut. Edge-finish with black and white PVC capping or leave in it's natural eco-chic state.

Have your logos, brands, patterns or images direct inkjet-printed on any surface.

Width / Depth / Height
650 / 350 / 2095mm



Knights

With ample branding space and 3 shelves, this merchandiser is a compact solution, taking up very little space.

Have your logos, brands, patterns or images direct inkjet-printed on any surface.

Width / Depth / Height
650 / 350 / 1400mm



Jim

The Jim free-standing merchandiser offers large shelf area, for heavy-weight products. It incorporates large side-branding areas, coupled with a header branding panel which can be shape-cut.

Width / Depth / Height
615 / 450 / 1600mm

Free Standing Merchandisers



Short Curved Stand

A lightweight, flat-packed, short, freestanding unit.

Best used for smaller items.

Have your logos, brands, patterns or images direct inkjet-printed on any surface.

Width / Depth / Height
500 / 450 / 1350mm

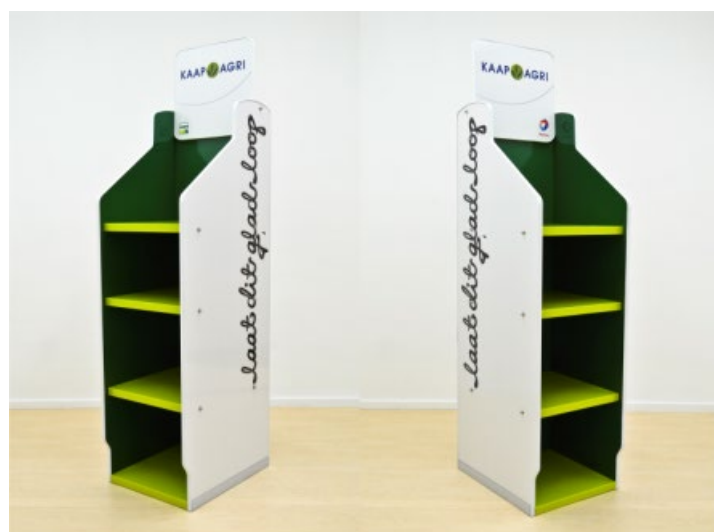


Blank 5 Shelf

With ample branding space and 4 shelves, this merchandiser is a compact solution, taking up very little space.

Have your logos, brands, patterns or images direct inkjet-printed on any surface.

Width / Depth / Height
440 / 380 / 1500mm



Total

The Jim free-standing merchandiser offers large shelf area, for heavy-weight products. It incorporates large side-branding areas, coupled with a header branding panel which can be shape-cut.

Width / Depth / Height
450 / 600 / 1800mm

Free Standing Merchandisers



Ben

A large free standing unit with alternating shelving options and ample branding space. Have your logos, brands, patterns or images direct inkjet-printed on any surface.

Width / Depth / Height
480 / 388 / 1570mm



Hill

A flat packable, compact FSU that assembles in minutes. Ample branding space coupled with a small footprint. Have your logos, brands, patterns or images direct inkjet-printed on any surface.

Width / Depth / Height
400 / 316 / 1550mm



VeeVee

The VeeVee free-standing merchandiser is a slim unit, for stackable products. It incorporates large side-branding areas, coupled with a header branding panel which can be shape-cut.

Width / Depth / Height
434 / 570 / 1320mm

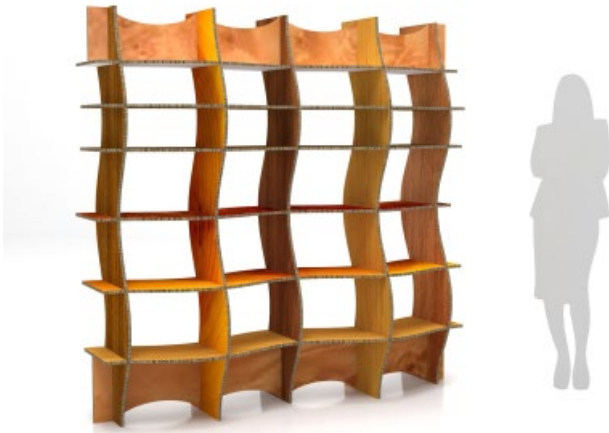
General



Wave

Wave will hold a wide mix of lightweight products not exceeding 5kg per pigeon hole. It flat-packs easily and is great as a backdrop to an exhibition stand or showroom. Use it as a room divider too.

Width / Depth / Height
2100 / 430 / 2100mm



ZigZag

A fantastic solution for advertising space or as a demarc, standing at 450mm x 3100mm x 2600mm tall, it offers ample space for branding.

Have your logos, brands, patterns or images direct inkjet-printed on any surface.

Width / Depth / Height
3100 / 450 / 2600mm



Sleigh

A fantastic solution for advertising space or as a demarc, it offers ample space for branding and product placement.

Have your logos, brands, patterns or images direct inkjet-printed on any surface.

Width / Depth / Height
503 / 1092 / 593mm





Tree with Shelves

A lightweight, flat-packed, easy to assemble, 360 degree stock display tree. Have your logos, brands, patterns or images direct inkjet-printed on any surface.

Width / Depth / Height
1205 / 1205 / 2352mm



Tree Stand

A free standing, 4 sided promo stand that It flat-packs easily and is great as a backdrop to an exhibition stand or showroom. Use it as a room divider too.

Width / Depth / Height
1840/ 1804/ 2200mm



Walleys Tree

A fantastic solution for advertising space or as a demarc, it offers ample space for branding or as an addition to a exhibition stand. Have your logos, brands, patterns or images direct inkjet-printed on any surface.

Width / Depth / Height
2038 / 2038 / 2422mm

Exhibition Stands and Accesories



Pop Up Office

Setup is a breeze for this private meeting room solution, ample space for branding and storage.

Have your logos, brands, patterns or images direct inkjet-printed on any surface.

Width / Depth / Height
2100 / 430 / 2200mm



Pop Up Shop

It doesn't come easier than this for an instant shop-in-shop solution.

Have your logos profile cut on the header panel and printed on any surface.

Width / Depth / Height
2000 / 2025 / 2900mm



Rhino

A fantastic solution for attracting attention. Have a giraffe or horse, or have your mascot cut out as a larger than life 3D exhibit piece. Have your logos, brands, patterns or images direct inkjet-printed on any surface.

Width / Depth / Height
650 / 2200 / 1300mm